

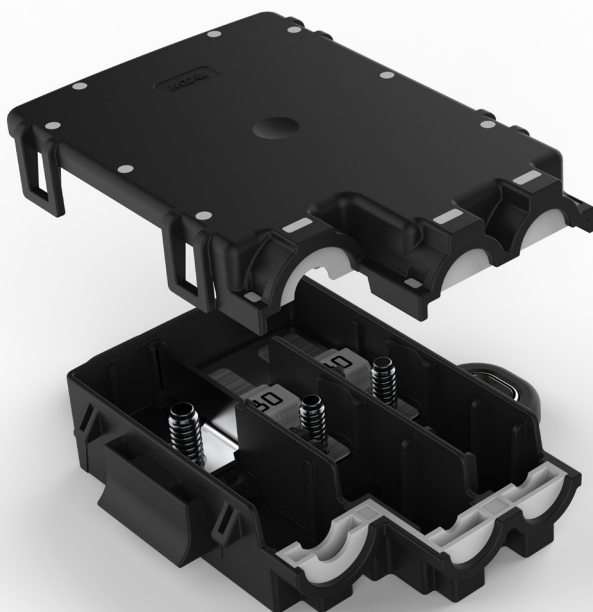
A power distribution unit for Renault diesel cars

Shanghai, 16th April 2019. MTA, a multinational company headquartered in Italy, known for the development and production of a wide range of electromechanical and electronic products for major OEMs, showcases during Auto Shanghai (hall 5.2 stand 5BG123) an electromechanical unit specifically developed for Renault. This important supply to the OEM is a further evidence of the long partnership between MTA and Renault, active for more than 20 years.

The product developed for Renault Scénic, Talisman, Kadjar, Espace and Mégane is intended to protect the fan control unit in diesel engines. The unit is supplied with two 80 A MidiVal fuses, manufactured by MTA, which are clinched to the bus-bar.

The power distribution box has a very small size meeting the car manufacturer's requirements to save space in the engine bay. The fuse body and the cover are overmolded with a silicon gasket for an IP5K3 protection against dust and water and they are guaranteed for operations between -40°C and +85°C.

To learn more about MTA's electromechanical units supplied to cars, motorcycles and heavy-duty vehicles, please visit www.mta.it/en/power-distribution-units.



CMF1 has a very small size meeting the car manufacturer's requirements to save space in the engine bay.

Download the press kit: www.mta.it/en/autoshanghai-2019

MTA at Auto Shanghai – Hall 5.2, stand 5BG123



The Group

MTA S.p.A. is a global leader in the development and production of a wide range of electromechanical and electronic products developed internally for the primary manufacturers of cars, motorcycles, tractors, and heavy vehicles. Founded in 1954, MTA has two production sites in Italy (Codogno and Rolo), 8 foreign sites, sales of about 205 million Euro, and 1480 employees.

READ MORE

-  www.mta.it
-  [MTA.GROUP](#)
-  [mta-s-p-a-](#)
-  [MTAItaly](#)
-  [MTA-CN2014](#)

MTA China

MTA China was established in 2014 in order to pursue all opportunities offered by the global automotive market and particularly by China market where local and European OEMs have established large plants. The site is located in the Huaping Intelligent Manufacturing Park, Jinshan Industry Zone, Shanghai and is certified according to IATF 16949 and ISO 14001 for environmental certification. To support the steady production increase, the site will also be equipped with a molding department by the end of 2019.

MTA PRESS OFFICE

COM&MEDIA Barbara Maggi – Silvia Casazza | +39 02 45409562 | uffstampa@comemedia.it