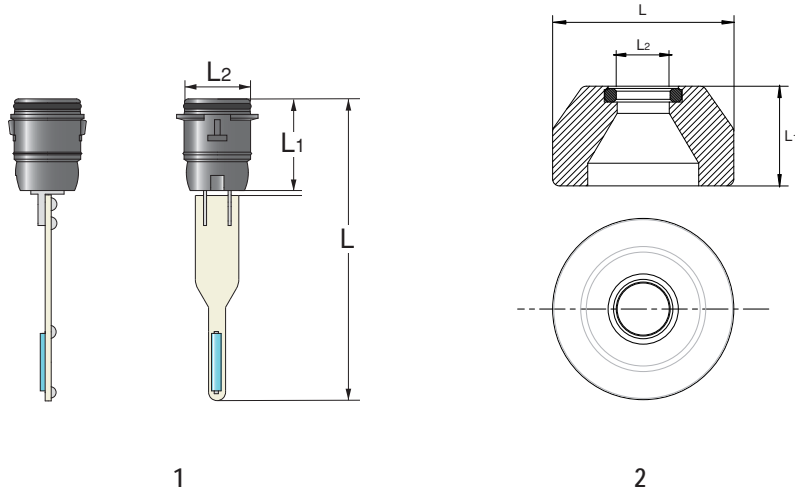
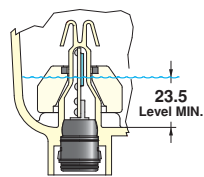


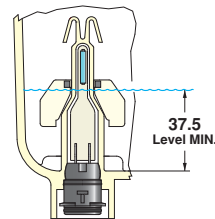
LEVEL SENSORS



IMG	DESCRIPTION	TYPE mm	L mm	L ₁ mm	L ₂	MATERIAL	P/N	M.O.Q.
1	LEVEL SENSOR	A	58,15	24,25	17,35	PA66	7050090	600
	LEVEL SENSOR	B	79,65	24,25	17,35	PA66	7050091	400
2	FLOAT	A-B	40	22	11,5	PP	7057091	1000

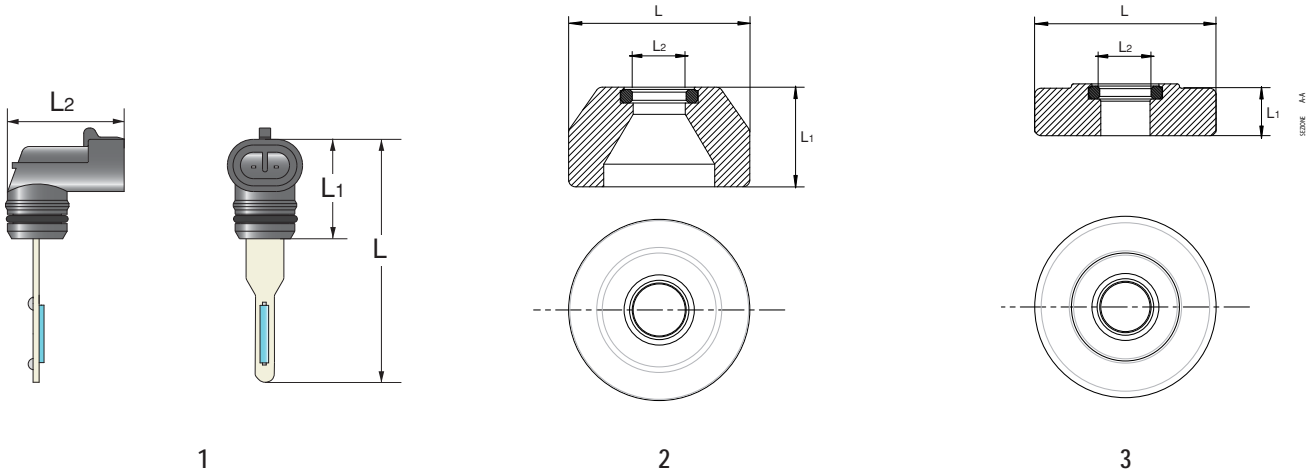


A

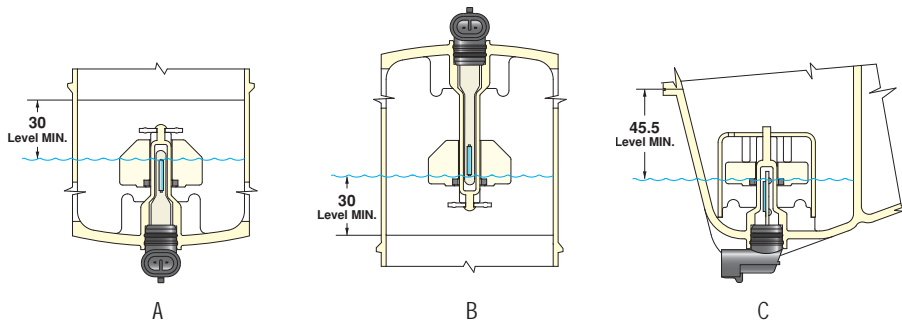


B

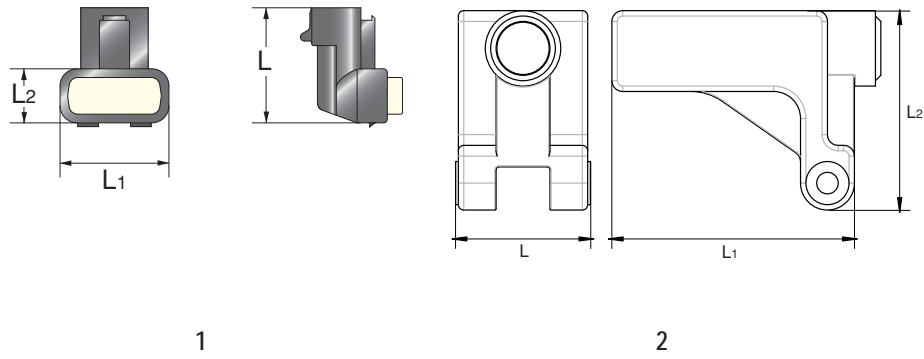
LEVEL SENSORS



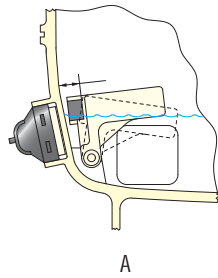
IMG	DESCRIPTION	TYPE	L mm	L ₁ mm	L ₂ mm	MATERIAL	P/N	M.O.Q.
1	LEVEL SENSOR	A	64,4	26,4	30,9	PA66	7050088	600
	LEVEL SENSOR	B	84,4	26,4	30,9	PA66	7050096	400
	LEVEL SENSOR	C	53,7	26,4	30,9	PA66	7050092	600
2	FLOAT	A - B	42	24	11,4	PP	7057088	1000
4	FLOAT	C	42	11	11,4	PP	7057092	1000
	FLOAT	A	42	11	11,4	PA	7057093	1000
3	FLOAT		40	22	11,5	PP	7057091	1000



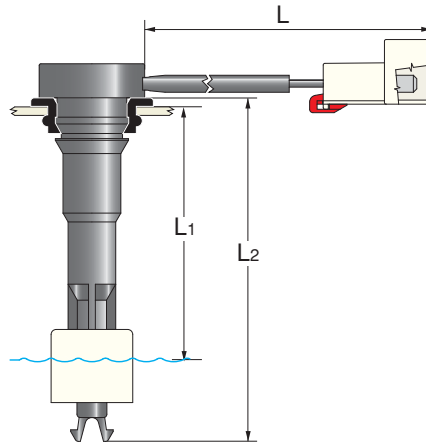
LEVEL SENSORS



IMG	DESCRIPTION	TYPE	L mm	L ₁ mm	L ₂ mm	MATERIAL	P/N	M.O.Q.
1	LEVEL SENSOR	A	30,45	28,8	14,3	PA66	7050081	620
2	FLOAT	A	25	45	25	PP	7057081	1000

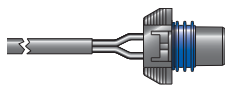


LEVEL SENSORS

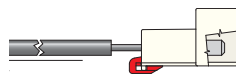


1

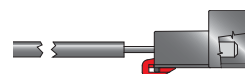
IMG	DESCRIPTION	TYPE	L mm	L ₁ mm	L ₂ mm	MATERIAL	P/N	M.O.Q.
1	LEVEL SENSOR	C	~ 300	51÷56	80	PP	7050055	720
	LEVEL SENSOR	B	~ 200	71÷76	101	PP	7050056	720
	LEVEL SENSOR	B	~ 200	82,5÷87,5	121	PP	7050072	240
	LEVEL SENSOR	C	~ 300	49÷54	75	PP	7050075	720
	LEVEL SENSOR	A	~ 215	82,5÷87,5	121	PP	7050082	240
	LEVEL SENSOR	C	~ 160	73÷78	97,6	PP	7050093	240
	LEVEL SENSOR	C	~ 210	41÷46	69,6	PP	7050094	240



A



B



C