



PRODUCT PIPELINE

Some of the latest products for industrial equipment.



COLOR DISPLAY

MTA announced that Case Construction Equipment has spec'd its Black Hawk display for its new B Series of Case skid steer and compact track loaders.

Black Hawk is an 8 in. color TFT (thin-film-transistor) display, flanked at the bottom by a six-button keypad, which allows it to have the status and settings of the machine under control quickly and intuitively, said the company.

Black Hawk has IP69k and a high resistance to vibrations and temperatures.

The development of Black Hawk by the electronic division of MTA was conducted on the Android platform, which includes standard features that have allowed Case Construction Equipment technicians to develop dedicated applications, customizing the software based on the application needs of the two ranges of loaders.

www.mta.it

WIRELESS SENSORS

SKF has released a compact vibration and temperature sensor for monitoring the condition of rotating parts on heavy industrial machinery. Designed principally for use as part of an SKF Rotating Equipment Performance (REP) solution, the company said the Enlight Collect IMx-1 sensor enables customers to reduce downtime and maintenance costs.

Powered by batteries, the sensor can be deployed in large numbers to automate the gathering of machine data. When mounted to a bearing housing, collected data can be wirelessly sent to a host computer network, where it can then be forwarded to cloud-based analysis services at SKF REP centers.

The system relies on a self-forming mesh network that allows sensors to relay data between one another. The SKF Enlight Collect IMx-1 has been designed to achieve ingress protection rating of IP69K.

www.skf.com/imx1

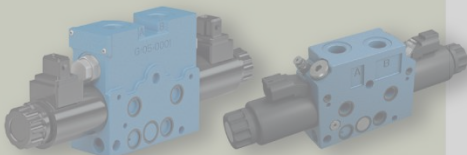
DIRECTIONAL VALVE

Bosch Rexroth developed the new EDG series of proportional directional valves for hydraulic systems where compactness, robustness and high-performance are needed in mobile equipment and vehicle applications.

The valves are available in two versions: the compact and high-body. Compact versions can also be equipped with secondary relief and anti-cavitation valves and/or load-sensing cut-off valves for individual, independent pressure setting on A and B ports. The high-body version can be equipped with integrated counterbalance or pilot operated check valves for maximum compactness and lightweight assemblies.

Both versions are rated for 5000 psi (350 bar) and 10.5 gpm (40 lpm) with internally optimized low pressure drop.

The EDG family comes with standard and customizable inlets that can be configured for either fixed or variable displacement pumps. For fixed displacement pumps, the company provides a two-stage pressure compensator to fully unload the pump and reduce fuel consumption when none of the implement functions need actuation.



www.boschrexroth-us.com

CHAIN CONDITION MONITORING

Developed in-house by chain specialist Iwis, the CCM-S (Chain Condition Monitoring – Smart) chain condition monitoring system continuously measures the wear elongation of chains during operation and gives a timely warning that a chain needs to be replaced or re-tensioned.

The system measures chain elongation without any contact and does not actively intervene in the chain drive. The module can be easily retrofitted in a variety of chain applications, said the company. The module is plug and play and does not require the user to perform any calibration in the application. The module is simply installed in the machine and the system is ready for use as soon as the cable is plugged in.

The system can also take measurements irrespective of the speed, said the company. It records two readings at two different sensor locations, with both



readings being taken at the same time.

The system uses a sensor to measure the temperature at the sliding guide on the surface of the chain rollers. A lack of lubrication can be indicated by excessive chain strand temperatures. Also, if the chain hits the sliding guide of the module, that is registered by a jolt sensor in the system. This can, said the company, be caused by stiff links, which in turn result from inadequate lubrication.

www.iwis.com